



Government Street Closure and Trail Detour During Construction

We're working in your neighbourhood in Burnaby, BC

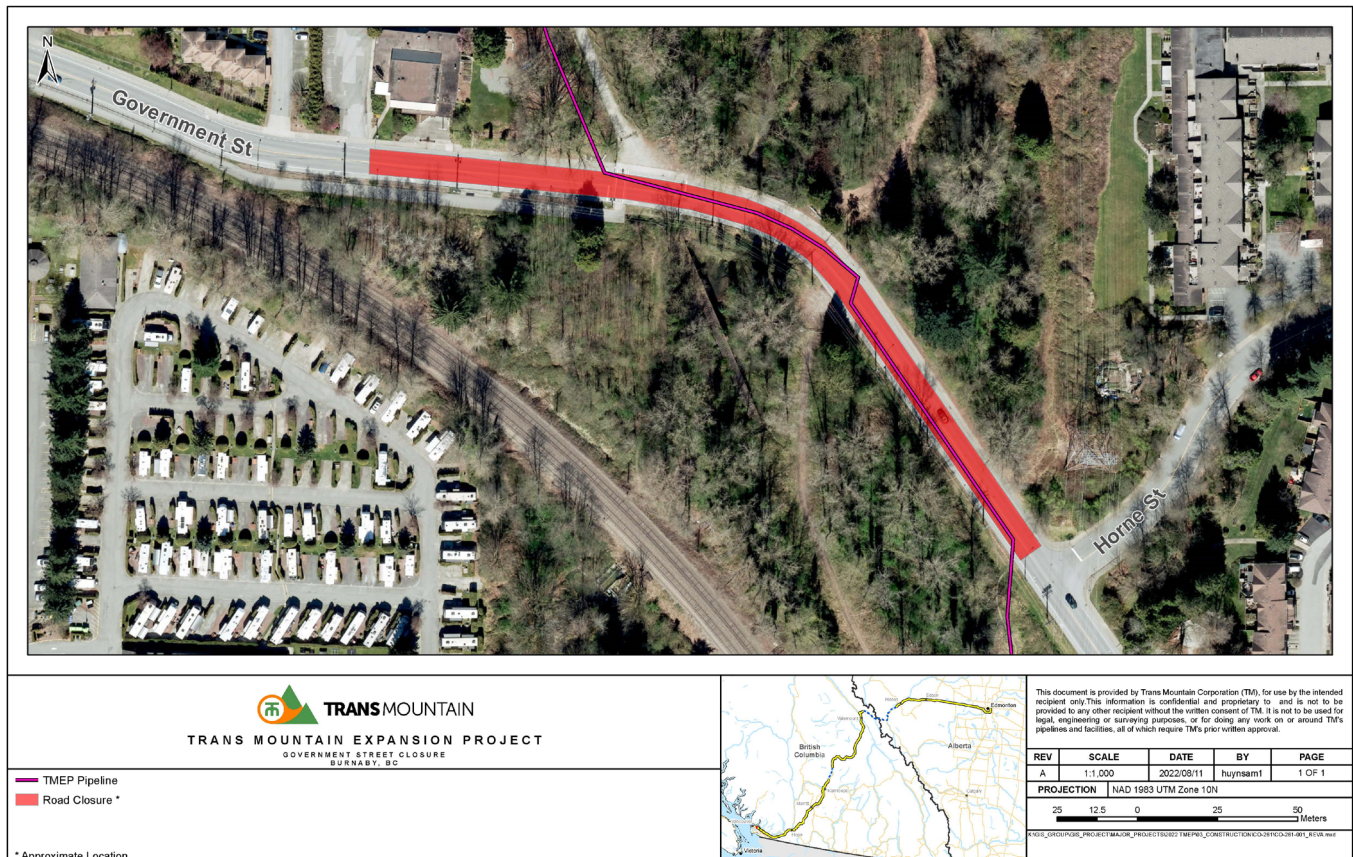
Summer 2022 to Spring 2023*

As we advised in January 2022, Government Street, between Horne Street and the Brunette Fraser Regional Greenway - Burnaby Mountain Urban Trail, will be temporarily closed to traffic and detour signage will be in place starting late summer 2022 through to spring 2023*. Pipeline construction will occur in a series of phased activities along Government Street.

While the road is temporarily closed during construction, pedestrians and cyclists are encouraged to use detour routes. For your safety, please follow the direction of traffic control personnel and signage in the area. Bus route #101 will also be temporarily re-routed. Please visit translink.ca for bus detour routes and schedules.

You will notice traffic pattern changes and increased activity in the area where construction is taking place. Traffic management plans have been developed to minimize disruptions to traffic and neighbours. Your patience is appreciated as we work to minimize disruptions associated with these activities.

ROAD CLOSURE MAP



* Dates are subject to change and commencement of work is subject to necessary approvals and permits

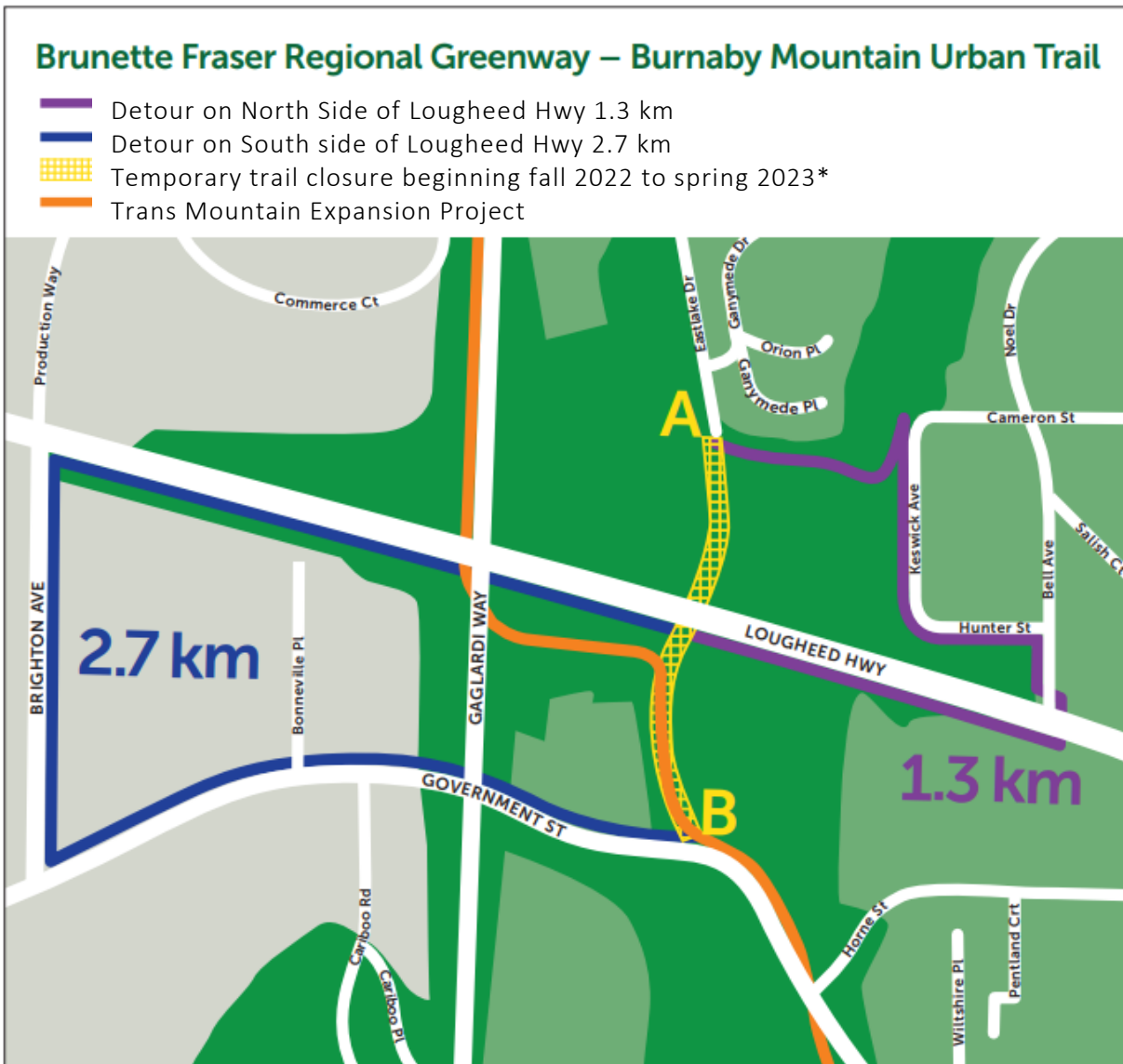


Brunette Fraser Regional Greenway - Burnaby Mountain Urban Trail Temporary Detour

During pipeline construction along the Brunette Fraser Regional Greenway - Burnaby Mountain Urban Trail between Government Street and Lougheed Highway - temporary trail detours will be in place between fall 2022 and spring 2023*.

Safety of trail users is our priority. Please follow all signage and traffic control personnel instructions in the area for your safety.

TRAIL DETOUR MAP



For current information, please visit our interactive map at transmountain.com/map.

*Dates are subject to change and commencement of work is subject to necessary approvals and permits



SCOPE OF WORK

- Trenched pipeline construction on Government Street (road closure)
- Trenchless crossing under Lougheed Highway (for information about trenchless crossing methods please visit: transmountain.com/trenchless-construction)
- Hydrostatic testing, which is a well-established industry practice, will be used to verify the integrity of the pipeline prior to activation and use

WHAT YOU MAY NOTICE

- Temporary road and trail closures and detours
- Staging of trucks
- Construction signage, road barriers and traffic control personnel
- Additional directed lighting where needed
- Hand digging and/or hydrovac excavation
- Asphalt cutting and paving/patching
- Site surveying
- Pipeline installation
- Temporary construction impacts including intermittent construction noise, dust, odours

TYPICAL HOURS OF WORK*

- 7:00am to 8:00pm, Monday to Friday and 9:00am to 8:00pm on Saturdays
- Construction activities outside of the approved hours of work will only take place with all necessary permits and permissions in place
- At this time, no work is planned on Sundays and holidays
- Some activities may occur 24/7 (required for safe pipe installation)

We encourage you to sign up for construction updates at transmountain.com/map to receive any changes to the activities in your area.

OUR COMMITMENTS TO YOU

- Maintaining safe work environments
- Strategies for avoiding or reducing potential environmental effects will be employed at all stages of the Project
- Upon completion, the surveyed locations will be restored to municipal specifications and requirements
- Dust will be controlled using best industry practices, including water trucks and street sweepers
- Lighting will be directed only on areas of work for worker safety
- Traffic will follow site-specific traffic management plans
- Work will be conducted as safely and quickly as practicable

**Dates are subject to change and commencement of work is subject to necessary approvals and permits*

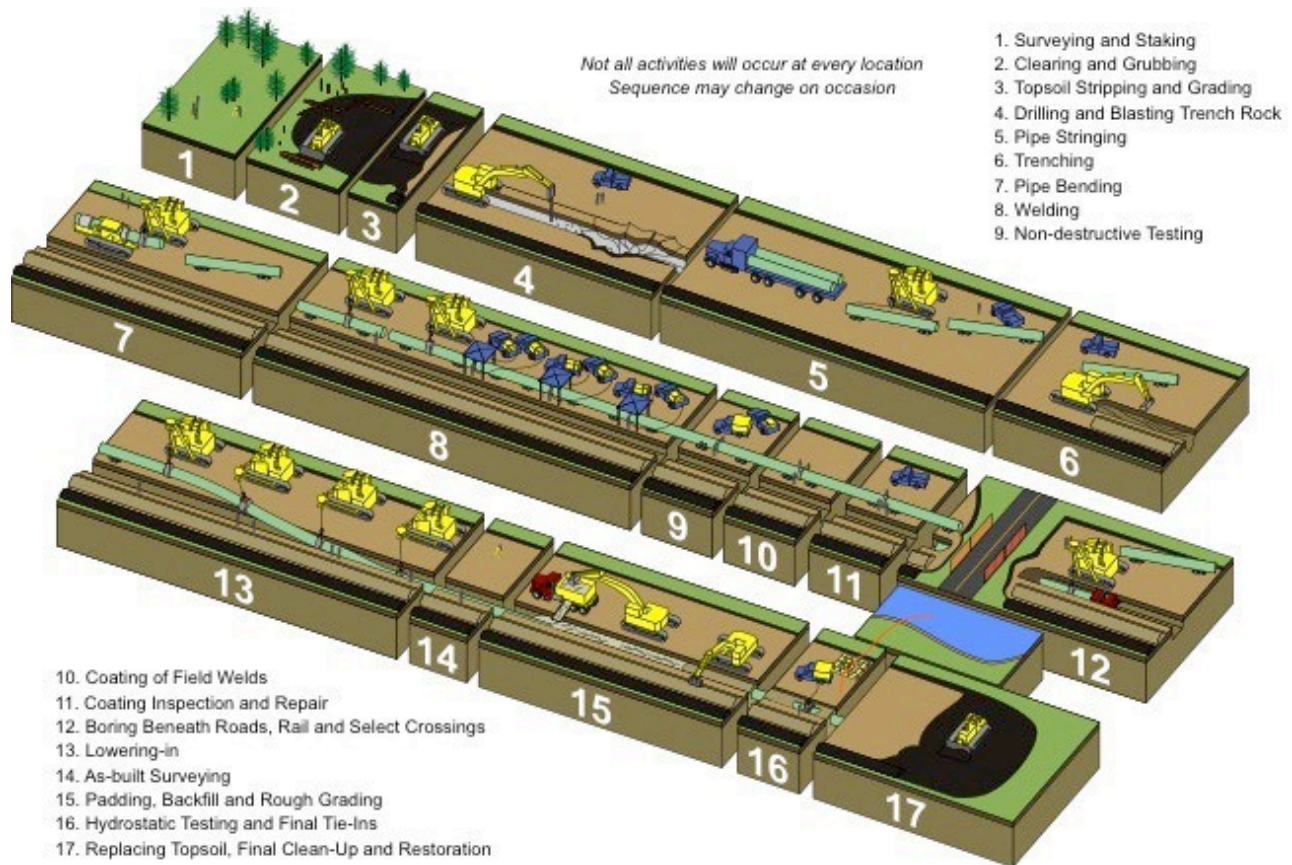
Le présent message contient des renseignements importants. Si vous avez besoin d'une traduction, veuillez communiquer avec info@transmountain.com.



TRANSMOUNTAIN

Construction Notice

TYPICAL TRENCHED PIPELINE CONSTRUCTION



For more information on Urban Construction, please visit: transmountain.com/general-construction.

All work will be conducted under Environmental Protection and Emergency Response Plans to ensure compliance with applicable environmental regulations and requirements. We will abide by applicable permitting requirements and will work as quickly as possible to complete these activities with minimal disruption.

CONTACT US: Trans Mountain

✉ info@transmountain.com
☎ 1.866.514.6700
🌐 transmountain.com

🐦 @TransMtn

📺 youtube.com/transmtn

📍 PO Box 81018
Burnaby, BC V5H 3B0

**Pipeline or construction
emergency?**
Call 24/7: 1.888.876.6711